

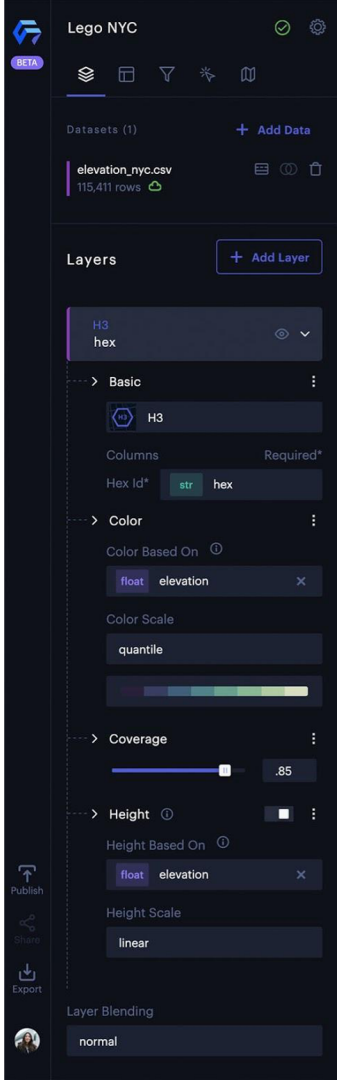


Unfolded Studio

Advanced Geo-analytics
on the Web

Showcasing the power of
open WebGL frameworks
deck.gl, kepler.gl and H3.

Public Slides. Updated 11.18.2020



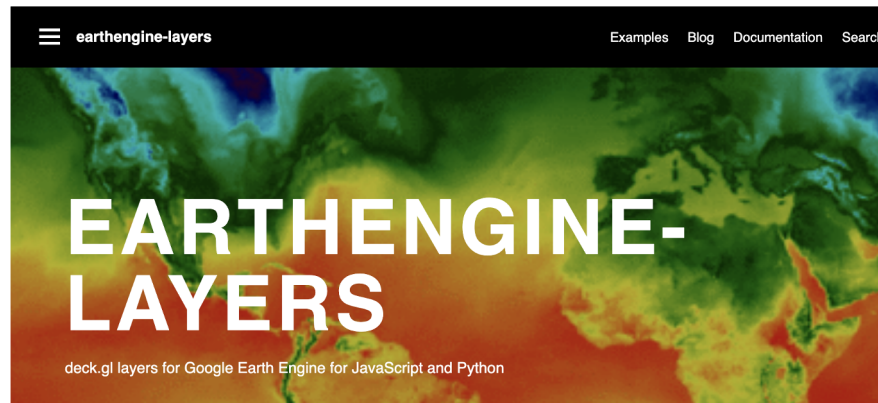
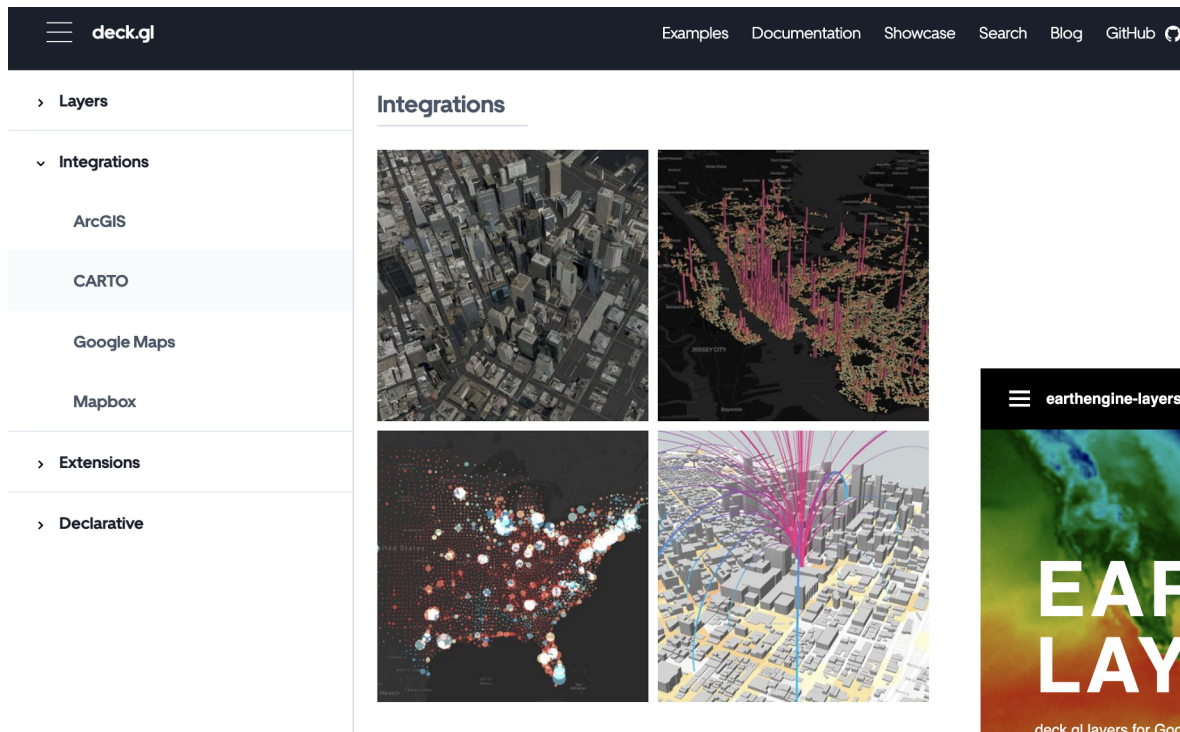
Cross-Industry Adoption

deck.gl / vis.gl - integration and adoption across the geospatial industry

CARTO for deck.gl: The Best Way to Develop Spatial Apps

[NEWS](#) 6 mins read [Share](#)

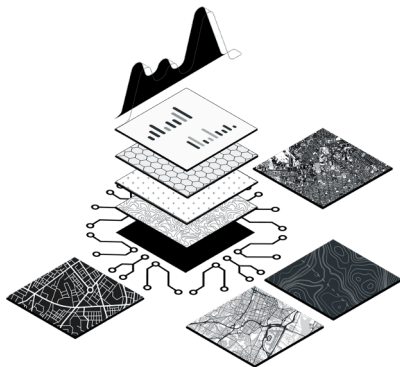
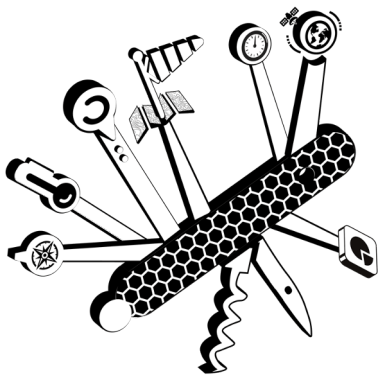
INTRODUCING
CARTO for deck.gl



Unfolded Studio is built for fast exploration of million-row geospatial datasets in the browser.

Free community access

<https://studio.unfolded.ai>



All-In-One Tool

Make geospatial insights with a few simple clicks

GPU-based Analytics and Visualization

Fluidly filter, aggregate, and playback million-row datasets in your browser

Unfolded Studio

Client Side Exploration

GPU Acceleration

15+ Preset Layers

Filtering and Interaction

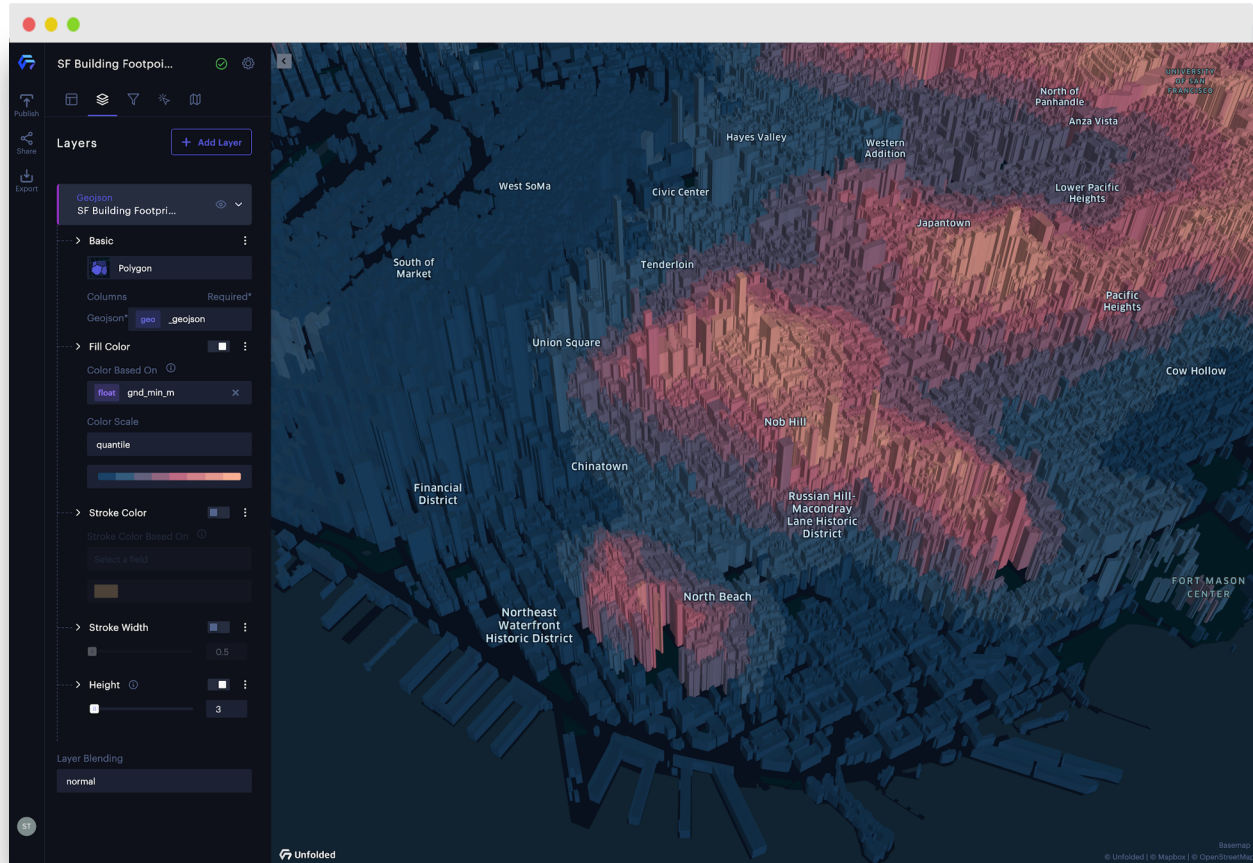
Data Operations

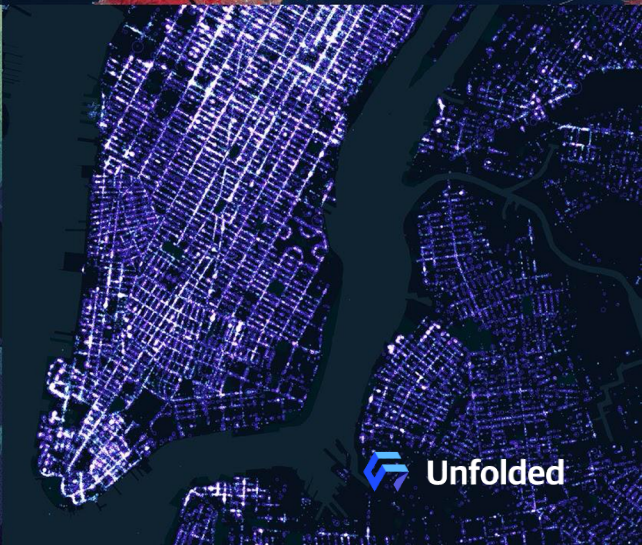
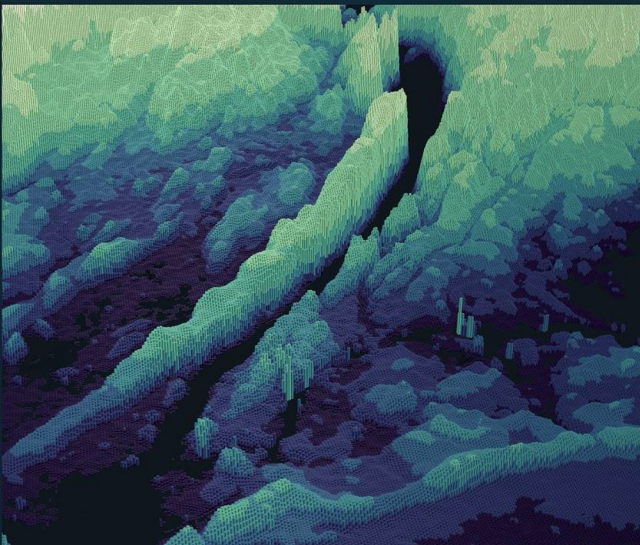
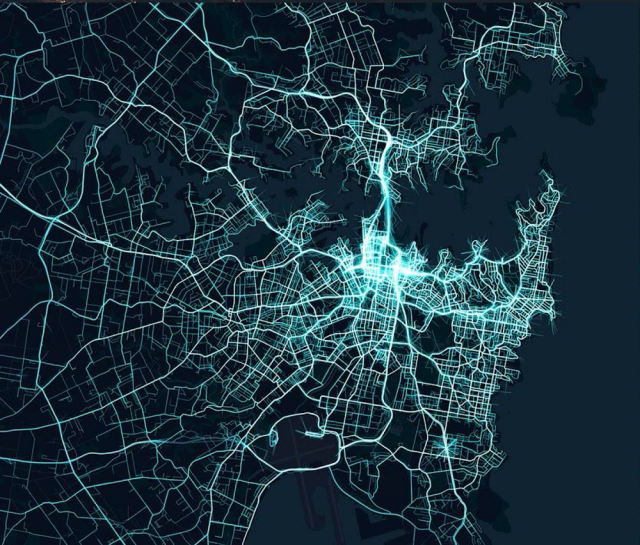
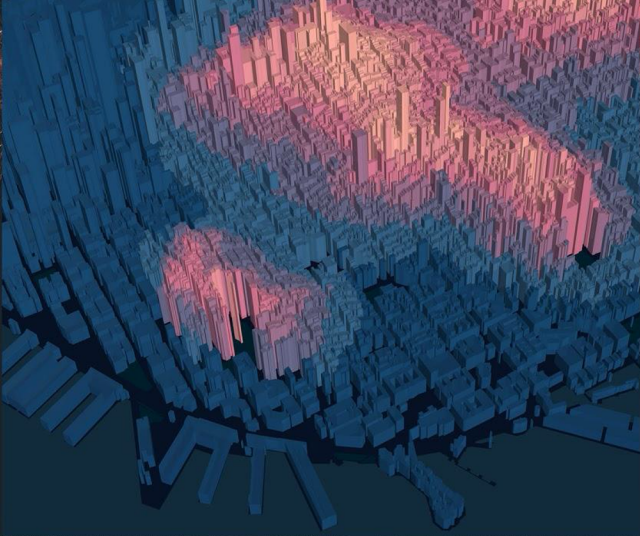
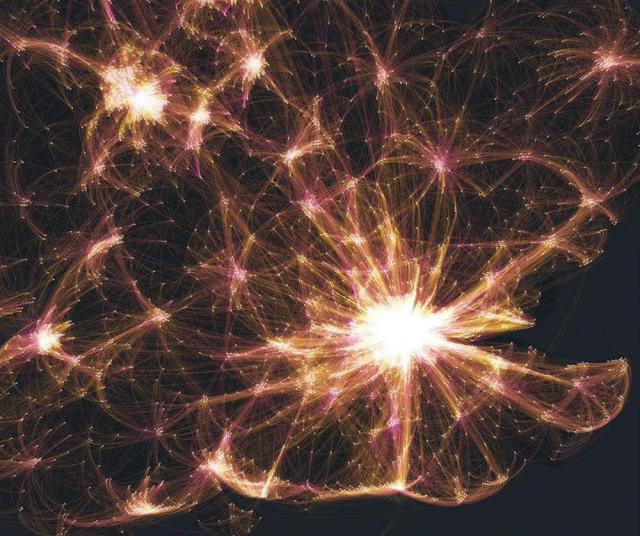
3D Maps

Planetary Datasets

Time Animation

On the Fly Aggregation





Data Layers

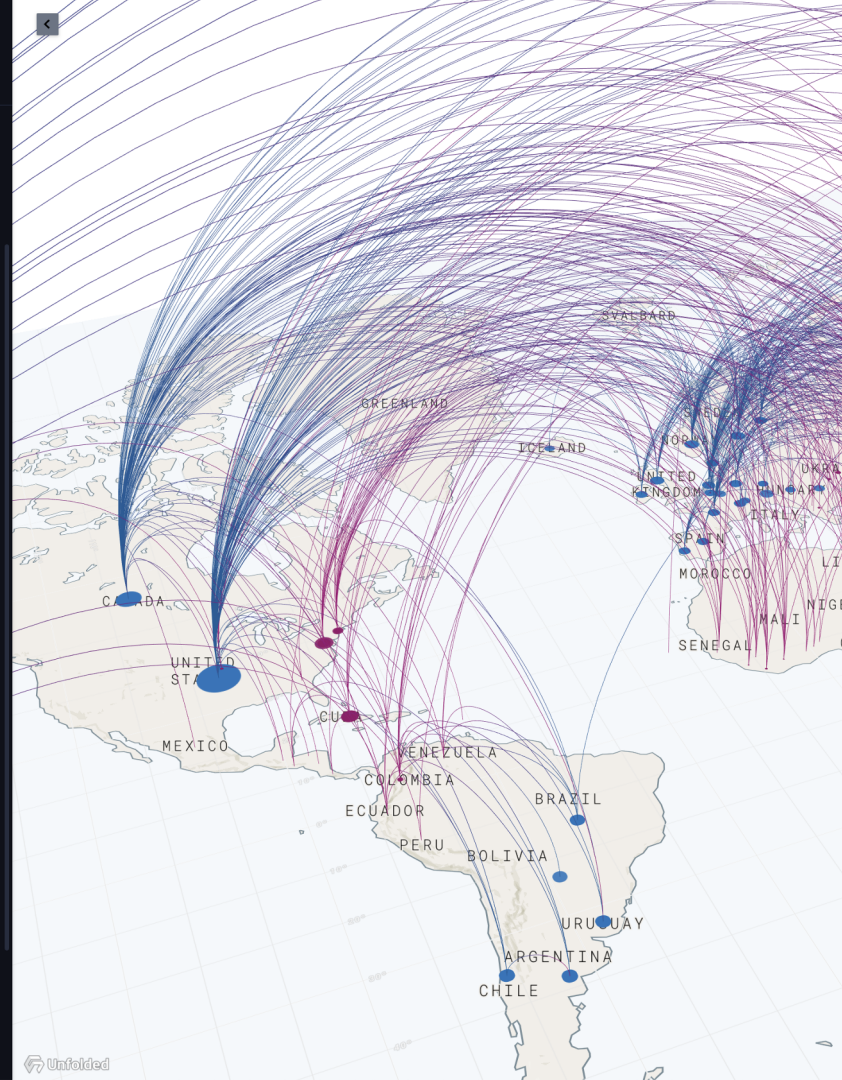
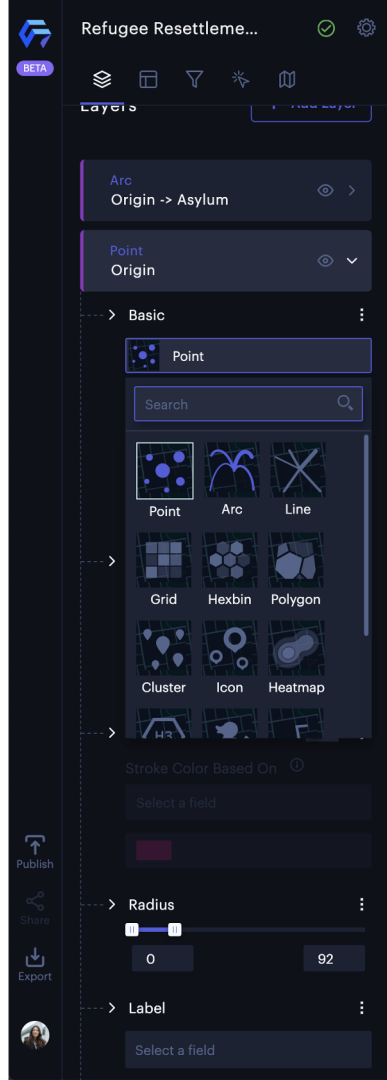
Extensive list of data layers to visualize all major geospatial data formats.

Includes point, arcs, path, admin boundary, vector tile, raster, H3, and scenegraphs.

15 preset data layers

Photoshop like layer UI

Multi channel visual encoding



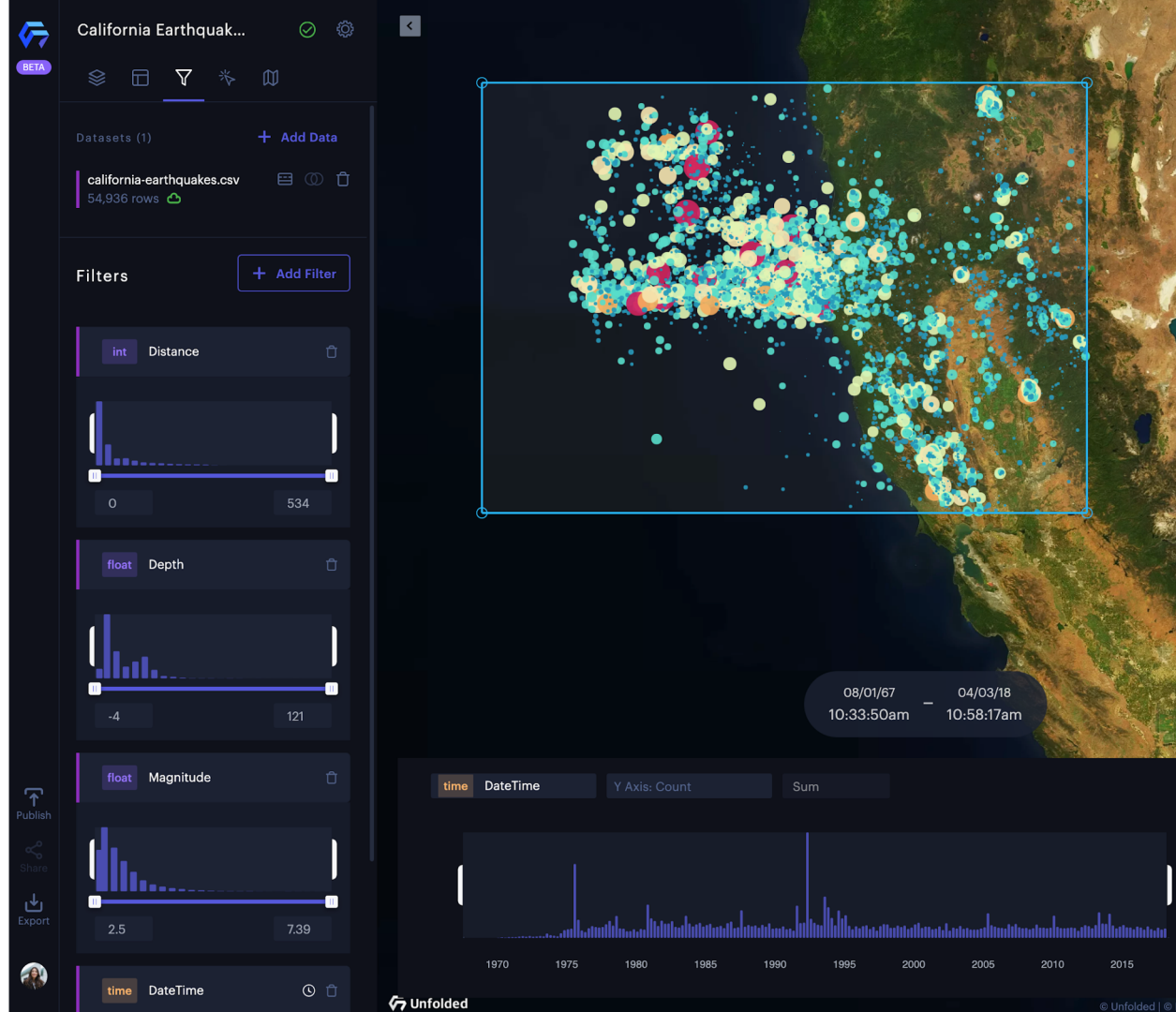
Real-Time Data Filtering

GPU accelerated client side filtering

GPU based filtering

Time animation

Cross filtering



On the Fly Aggregation

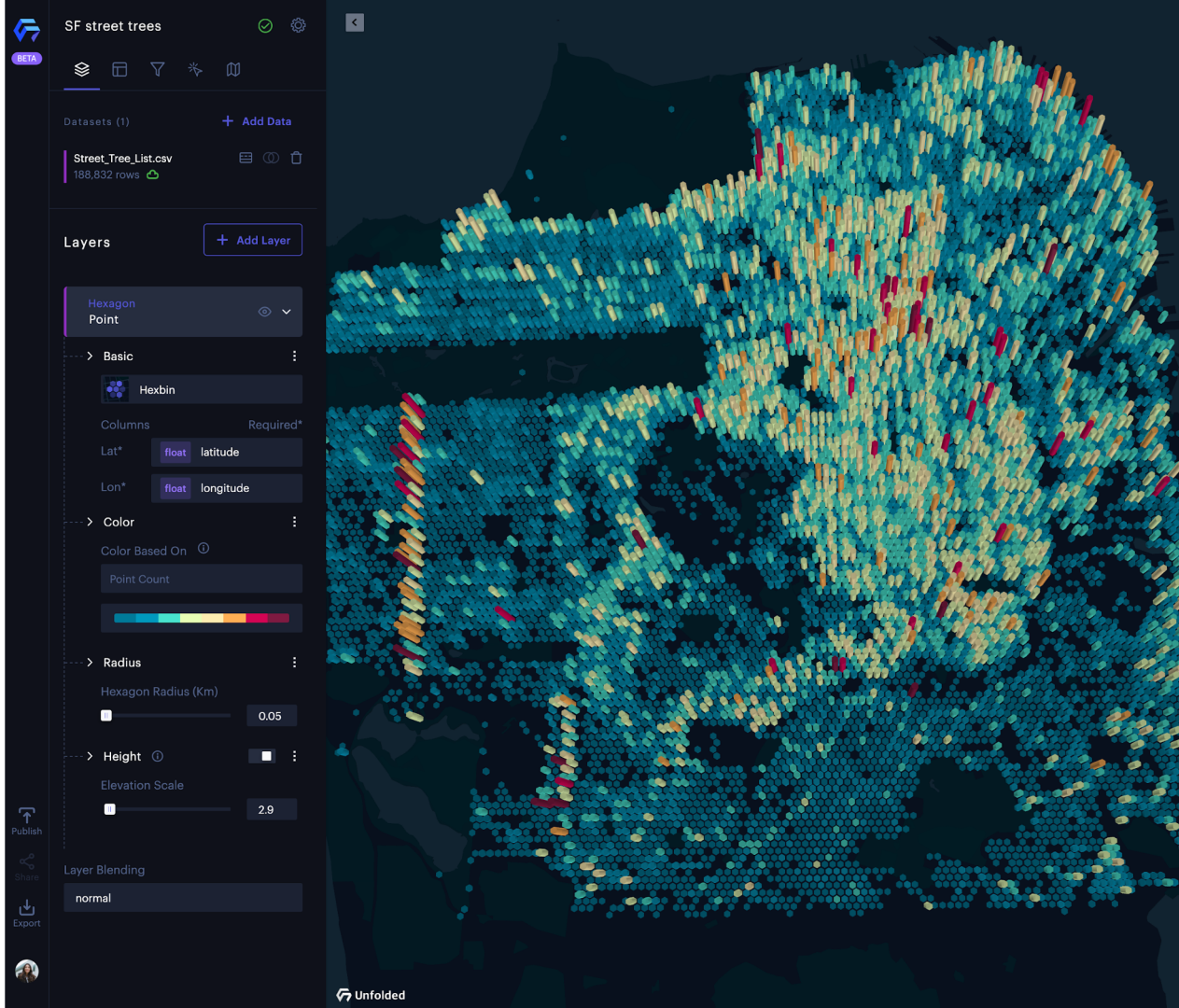
Continuous point aggregation
and clustering with heatmap,
grid, hexagons.

Grid, Hexbin, Heatmap

Kdtree Clustering

Aggregation by metrics

3D Enabled



Data Analytics

Column-based User Interface
enables in-app data operations.

Combine, join, group and
summarize data before
visualizing it.


Metric Columns (Expressions)

Group By

Table Joins

Geospatial joins Upcoming..





BETA

< Back

Join

Combine rows from two datasets based on a common field. Result will be added as a new dataset.

left

gz_2010_us_050_00_500k.json

ST-COUNTY

Columns >

Join Type

Right

income_estimates.csv

ST-COUNTY

Columns

Geo Columns (0)

Time Columns (0)

Attribute Columns (25)

int

State FIPS Code

int

County FIPS Code

str

Postal Code

str

Name

int

Poverty Estimate, ...

int

Poverty Estimate, ...

int

Poverty Estimate, ...

float

Poverty Percent, AI...

float

Poverty Percent, AI...

Cancel

Run

Join gz_2010_us_050_00_500k.json with income_estimates.csv

_geojson	GEO_ID	STATE	COUNTY	NAME
geo	str	int	int	str
{ "type": "Feature", "properties": { "GEO_ID": "0500000US01029", "STATE": "1", "COUNTY": "29" } }	0500000US01029	1	29	Cleburne
{ "type": "Feature", "properties": { "GEO_ID": "0500000US01031", "STATE": "1", "COUNTY": "31" } }	0500000US01031	1	31	Coffee
{ "type": "Feature", "properties": { "GEO_ID": "0500000US01037", "STATE": "1", "COUNTY": "37" } }	0500000US01037	1	37	Coosa
{ "type": "Feature", "properties": { "GEO_ID": "0500000US01039", "STATE": "1", "COUNTY": "39" } }	0500000US01039	1	39	Covington
{ "type": "Feature", "properties": { "GEO_ID": "0500000US01041", "STATE": "1", "COUNTY": "41" } }	0500000US01041	1	41	Crenshaw
{ "type": "Feature", "properties": { "GEO_ID": "0500000US01045", "STATE": "1", "COUNTY": "45" } }	0500000US01045	1	45	Dale
{ "type": "Feature", "properties": { "GEO_ID": "0500000US01049", "STATE": "1", "COUNTY": "49" } }	0500000US01049	1	49	DeKalb
{ "type": "Feature", "properties": { "GEO_ID": "0500000US01053", "STATE": "1", "COUNTY": "53" } }	0500000US01053	1	53	Escambia
{ "type": "Feature", "properties": { "GEO_ID": "0500000US01057", "STATE": "1", "COUNTY": "57" } }	0500000US01057	1	57	Fayette
{ "type": "Feature", "properties": { "GEO_ID": "0500000US01061", "STATE": "1", "COUNTY": "61" } }	0500000US01061	1	61	Geneva
{ "type": "Feature", "properties": { "GEO_ID": "0500000US01067", "STATE": "1", "COUNTY": "67" } }	0500000US01067	1	67	Henry
{ "type": "Feature", "properties": { "GEO_ID": "0500000US01075", "STATE": "1", "COUNTY": "75" } }	0500000US01075	1	75	Lamar
{ "type": "Feature", "properties": { "GEO_ID": "0500000US01077", "STATE": "1", "COUNTY": "77" } }	0500000US01077	1	77	Lauderdale
{ "type": "Feature", "properties": { "GEO_ID": "0500000US01079", "STATE": "1", "COUNTY": "79" } }	0500000US01079	1	79	Lawrence
{ "type": "Feature", "properties": { "GEO_ID": "0500000US01001", "STATE": "1", "COUNTY": "1" } }	0500000US01001	1	1	Autauga
{ "type": "Feature", "properties": { "GEO_ID": "0500000US01003", "STATE": "1", "COUNTY": "3" } }	0500000US01003	1	3	Baldwin
{ "type": "Feature", "properties": { "GEO_ID": "0500000US01005", "STATE": "1", "COUNTY": "5" } }	0500000US01005	1	5	Barbour
{ "type": "Feature", "properties": { "GEO_ID": "0500000US01007", "STATE": "1", "COUNTY": "7" } }	0500000US01007	1	7	Bibb
{ "type": "Feature", "properties": { "GEO_ID": "0500000US01009", "STATE": "1", "COUNTY": "9" } }	0500000US01009	1	9	Blount
{ "type": "Feature", "properties": { "GEO_ID": "0500000US01011", "STATE": "1", "COUNTY": "11" } }	0500000US01011	1	11	Bullock
{ "type": "Feature", "properties": { "GEO_ID": "0500000US01023", "STATE": "1", "COUNTY": "23" } }	0500000US01023	1	23	Choctaw
{ "type": "Feature", "properties": { "GEO_ID": "0500000US01025", "STATE": "1", "COUNTY": "25" } }	0500000US01025	1	25	Clarke
{ "type": "Feature", "properties": { "GEO_ID": "0500000US01027", "STATE": "1", "COUNTY": "27" } }	0500000US01027	1	27	Clay
{ "type": "Feature", "properties": { "GEO_ID": "0500000US01033", "STATE": "1", "COUNTY": "33" } }	0500000US01033	1	33	Colbert
{ "type": "Feature", "properties": { "GEO_ID": "0500000US01035", "STATE": "1", "COUNTY": "35" } }	0500000US01035	1	35	Conecuh
{ "type": "Feature", "properties": { "GEO_ID": "0500000US01043", "STATE": "1", "COUNTY": "43" } }	0500000US01043	1	43	Cullman
{ "type": "Feature", "properties": { "GEO_ID": "0500000US01047", "STATE": "1", "COUNTY": "47" } }	0500000US01047	1	47	Dale

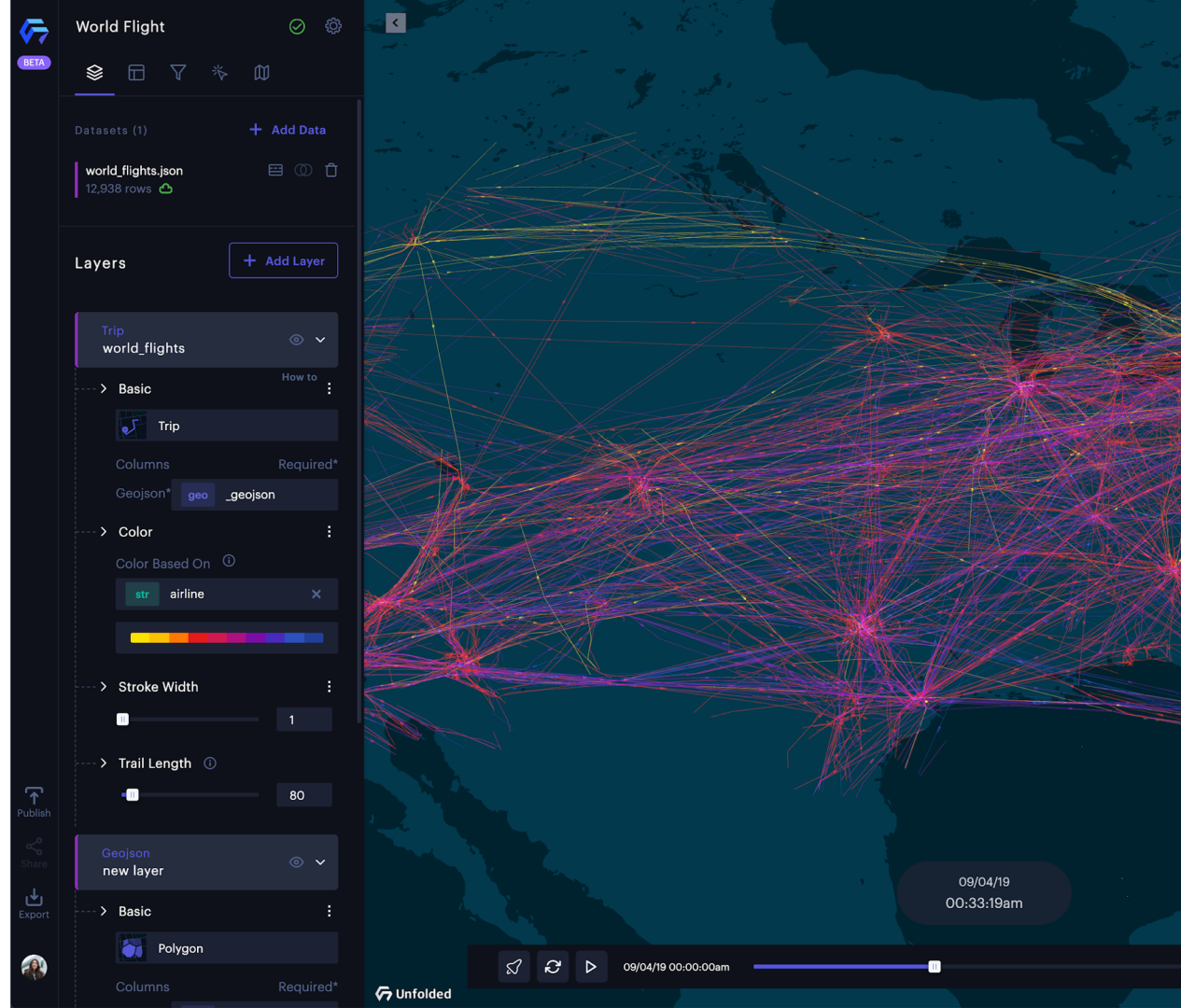
Spatio-Temporal Analytics

Automatic detection of datasets with time enabling filtering and animation.

Time filtering

Path animation

Temporal joins **Upcoming..**



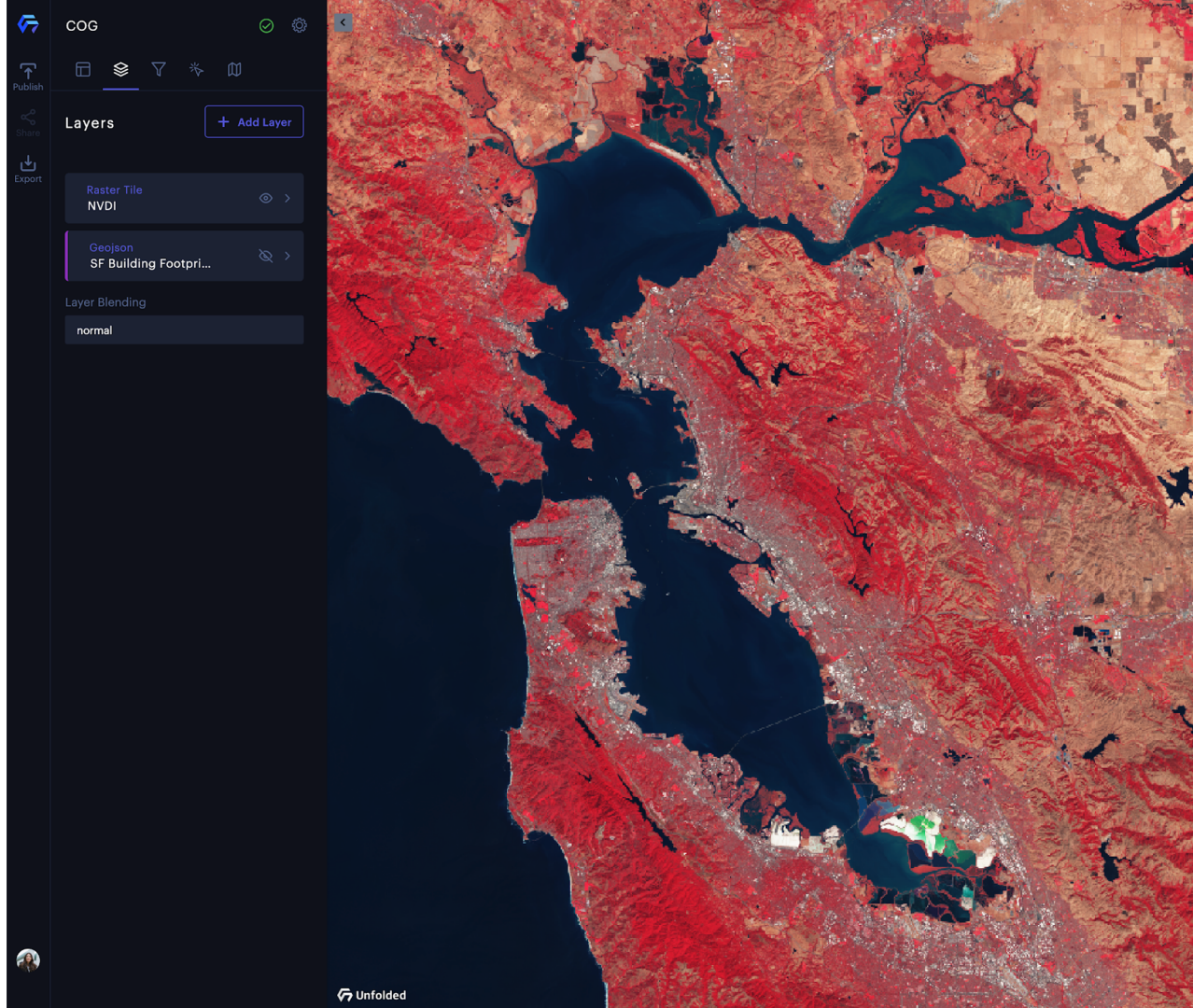
Tile based Data Sources

Cloud Optimized GeoTIFFs

High Bit-Depth Data

Textures

Data Texture Analytics
Unfolded
Vector and Raster Tiles



Globe

Upcoming

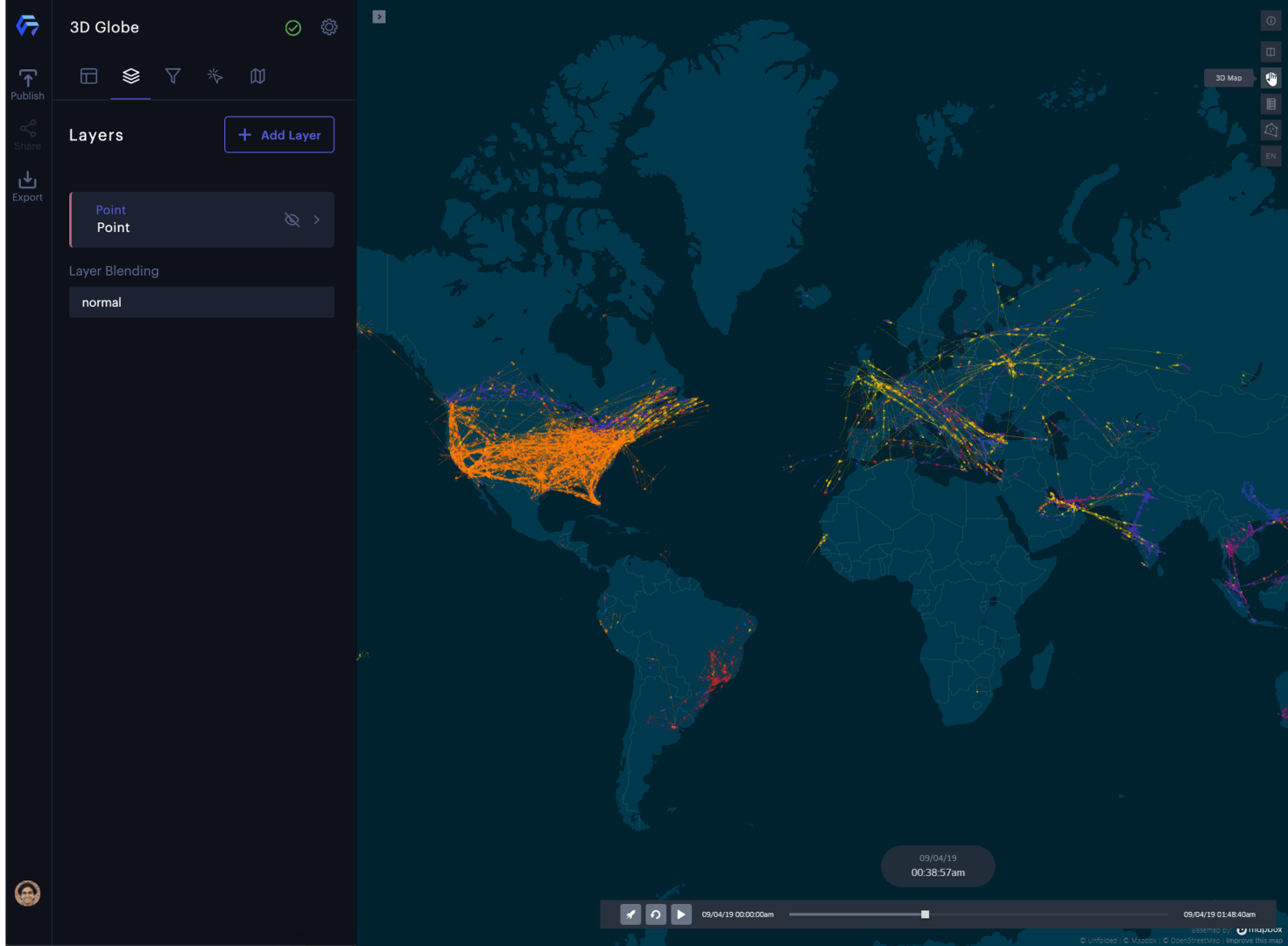
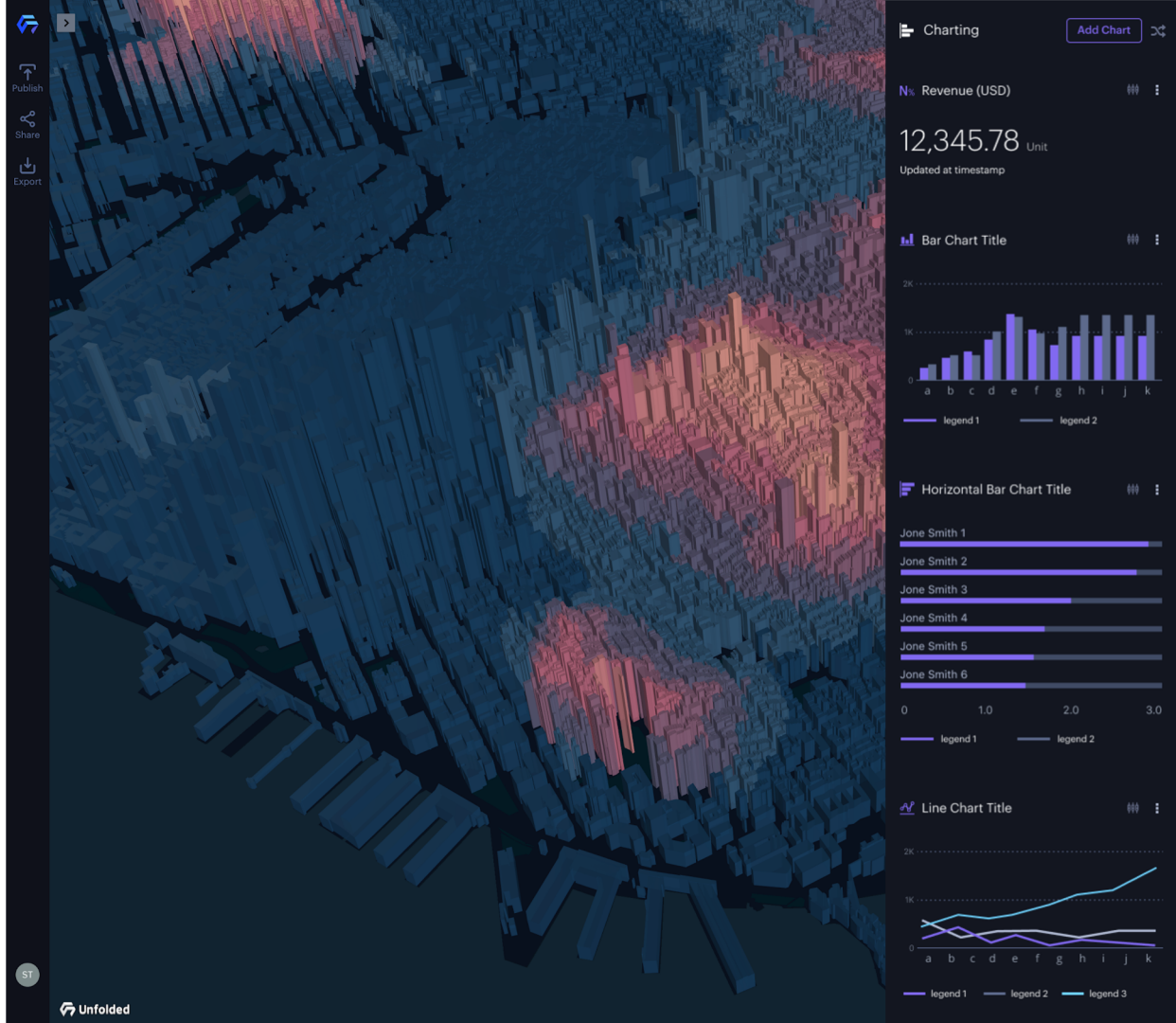


Chart Widget Support

Upcoming



Demo

